

# VDRF® ASFV Ag Rapid kit



## Advantages of VDRF® ASFV Ag Rapid kit

- ✓ Easy-to-handle rapid kit at field farm condition
- ✓ Fast identification of result within 15 minutes
- ✓ One drop (0.04cc) of blood sample is enough for the test
- ✓ Accurate result by measuring the immuno-fluorescent reaction signal

## Performances of VDRF® ASFV Ag Rapid kit

Sensitivity of VDRF® ASFV Ag Rapid kit depending on the Ct-value

Ct value	VDRF® ASFV Ag		Sum	Sensitivity
	Positive	Negative		
<21	100	0	100	100,0%
<22	101	1	102	99,0%
<24	101	3	104	97,1%
<25	105	6	111	94,6%

## Clinical Sensitivity

Individual sensitivity: **79.4% (n=173)**

Result		VDRF® ASFV Ag Rapid Kit		Sum
		Positive	Negative	
VDx® ASFV qPCR	Positive	108	28	136
	Negative	0	37	37
	Sum	108	65	173

Herd sensitivity: **100% (n=17)**

Result		VDRF® ASFV Ag Rapid Kit		Sum
		Positive	Negative	
VDx® ASFV qPCR	Positive	15	0	15
	Negative	0	3	3
	Sum	15	3	18

## ◦ Specificity

Clinical specificity: **99.9% on individual base(n=903), 97.7% on herd base(n=44)**

Result		VDRF <sup>®</sup> ASFV Ag Rapid Kit		Sum
		Positive	Negative	
VDx <sup>®</sup> ASFV qPCR	Positive	0	0	0
	Negative	1	902	903
	Sum	1	902	903

Analytical specificity: **100%**

Virus	Strain	Value	Result
ASFV recombinant protein	P30 rAg(PC)	408	Positive
Porcine parvovirus	PPV 120503	<2	Negative
Japanese encephalitis virus	JEV120523	<2	Negative
Porcine Circovirus type 2	CV2 120503	<2	Negative
TGE virus	-	<2	Negative
PED virus	-	<2	Negative
PRRS virus (type 1)	Lelystad	<2	Negative
PRRS virus (type 2)	VR2332	<2	Negative
CSF virus	120702	<2	Negative
Swine influenza virus	-	3	Negative
BVD virus	-	<2	Negative

## ◦ Interpretation and decision

Reading Value	Decision
less than 16	Negative
16~49	Suspect
more than 50	Positive

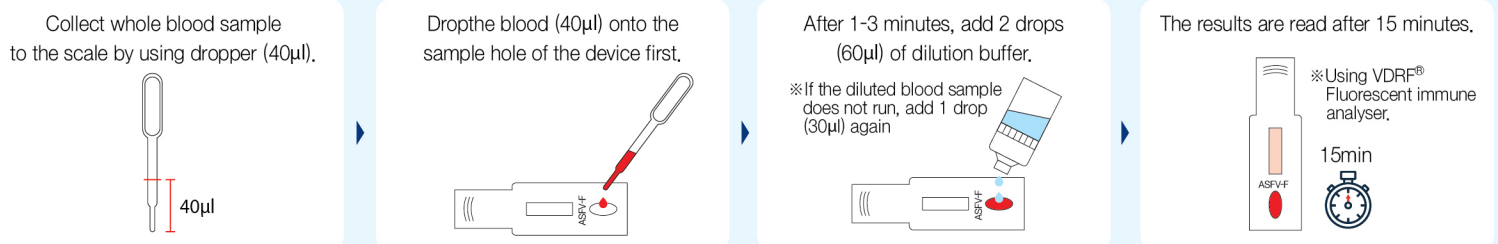
## ◦ Quick manual

### Precautions

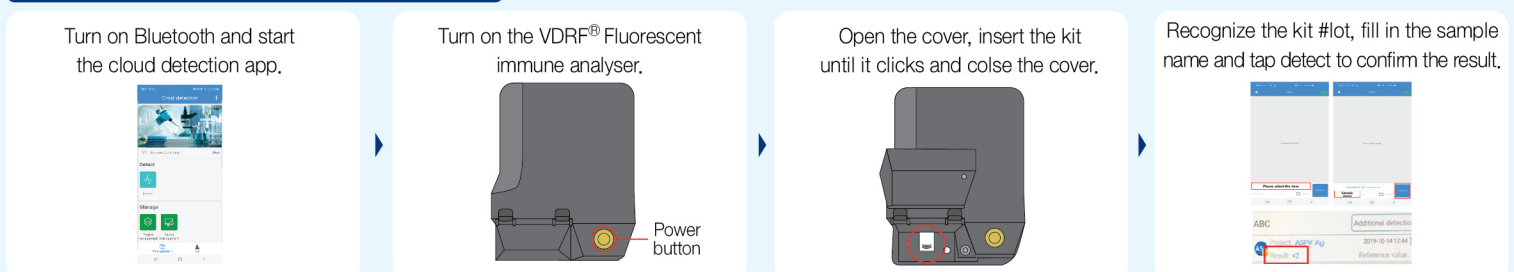
**At first, Cloud Application (App) should be installed in the Smart phone according to instruction manual of VDRF<sup>®</sup> Reader because the reader is operated by Cloud App.** The result of VDRF test can be checked only by the reader.

### Test Procedure (using Dropper Cap)

※ Fresh blood sample (collected within 3 days) should be used for the test. If the sample aged, the blood sample become sticky and may lead to non-specific reaction



### Result reading (15min after sample dropping)



**Seoul office:** C-1114, SK V1 GL Metrocity, 128, Beobwon-ro, Songpa-gu, Seoul, Korea  
**Tel.**+82-2-3401-0110, **Fax.**+82-2-3401-0112

**Headquarter:** 878, Sunhwandae-ro, Dongnae-myeon, Chuncheon-si, Gangwon-do, Korea  
**Tel.**+82-33-244-0100, **Fax.**+82-33-244-4634

**website:** www.mediandx.com

